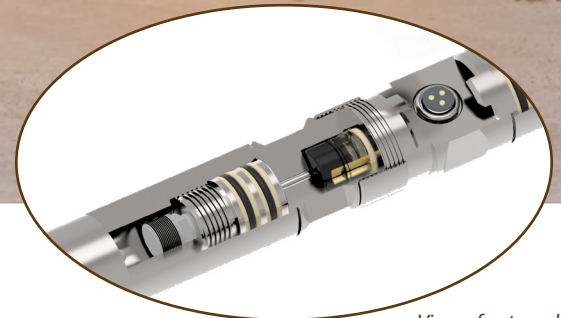


# CGM6

## Advanced Quartz Crystal Pressure and Temperature Downhole Memory Gauge\*

\* Qualified as per the AWES



View of external communication port, quartz and below



### // ENHANCED ELECTRONIC PERFORMANCES

- Enhanced metrology specifications (resolution).
- More autonomy, more memory capacity.
- ASIC-driven Multi-Chip Module (Hybrid-type electronic board).

### // INNOVATIVE BREAKTHROUGH / BENEFITS

- User-friendly and safely handling system.
- Compact external communication port.\*
- IP68 & shockproof electronic compartment.
- Ring locked battery connection.
- Environmentally responsible smart batteries.

\* CGM6-X Series available without external com port

### // APPLICATIONS

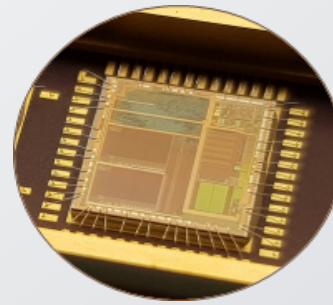
- Downhole reservoir testing : DST, interference testing and long term jobs.
- Exploration or appraisal testing : HPHT, hostile and extreme temperature wells test.
- Pressure surveys in production wells : static/ dynamic gradient and build-up test.
- Long term monitoring test.



# CGM6

Advanced Quartz Crystal  
Pressure and Temperature  
Downhole Memory Gauge\*

\* Qualified as per the AWES

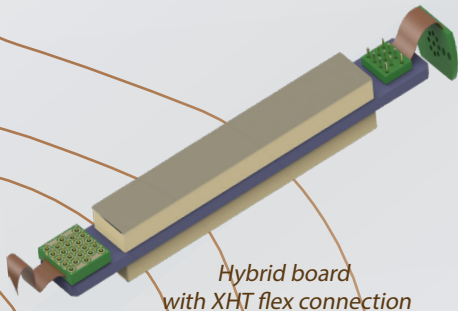


ASIC driven

## METROLOGY

Gauge Name	CGM6	CGM6-HT	CGM6- XHT	CGM6-UHT
<b>Pressure</b>				
Range	Atm. to 5 kpsi up to 30 kpsi (Atm. to 350 to 2000 bar)			
Accuracy	Accuracy = ± 0.015% FS for Prange ≤ 10kpsi (700 bar) Accuracy = ± 0.02% FS for 10k spi ≤ Prange ≤ 25kpsi (1725 bar) Accuracy = ± 0.025% FS for Prange ≥ 30kpsi (2000 bar)			
Resolution	< 1.10 <sup>-3</sup> psi (<6.10 <sup>-5</sup> bar)			
Drift	<0.02 % full scale per year			
<b>Temperature</b>				
Operating Range*	0 to 302°F (-20 to 150°C)	0 to 350°F (-20 to 177°C)	0 to 392°F (-20 to 200°C)	0 to 410°F (-20 to 210°C)
Accuracy	± 0.3°F (± 0.15°C)			
Resolution	<0.01°F (<0.005°C)			
<b>Battery type</b>				
Temperature < 150°C 150°C < Temperature < 200°C	P15-G6 ; L2P15-G6	P15-G6 ; L2P15-G6 P20-G6 ; 2P20-G6	P15-G6 ; L2P15-G6 P20-G6 ; 2P20-G6	P15-G6 ; L2P15-G6 P20-G6 ; 2P20-G6 ; 2P22-G6

\* Calibrated range starts at ambient temperature (20°C)



Hybrid board  
with XHT flex connection

## Mechanics

Material	17-4PH suitable for sour services ≤ 20 kpsi MP35N ≥ 20 kpsi Inconel 718 on demand
OD	1" ¼ (31,75 mm)
Length	24" up to 31" (61 to 79 cm)
Weight	5.4 to 6.6 lbs (2.5 to 3 kg)
Threads	15/16" 10 UNC (pin up x box down)
Bottom Nose	1/4" NPT (box)

## Computer & Software (Powered by Metrowin)

Programming Modes	Conventional, Advanced
Parameters	1/100s-18h Scanning Rate, Time delay, Pressure start (Trigger, Threshold)
Windows	Compatible from Windows 7 to Windows 10
Connector	USB
Memory Capacity	8.4M data points of pressure and/or temperature

Metrolog  
1110 Av. L'Occitane, Technoparc, Bat. 2  
C.S. 17619  
31676 LABEGE Cedex France  
Tél : (33) 5 61 34 80 74 - Fax: (33) 5 61 20 41 31  
E-mail : sales@metrolog.com  
Information subject to change without notice.

[www.metrolog.com](http://www.metrolog.com)

